

## In This Issue

**BERARD**  
SINCE  
1945  
The Mega Transport Experts

- > Ship's Ahoy! | Another JHSV Another Success!
- > Living Quarters Loaded Out!
- > Team Member Spotlight! | Dylan Albert

# Another JHSV Another Success!



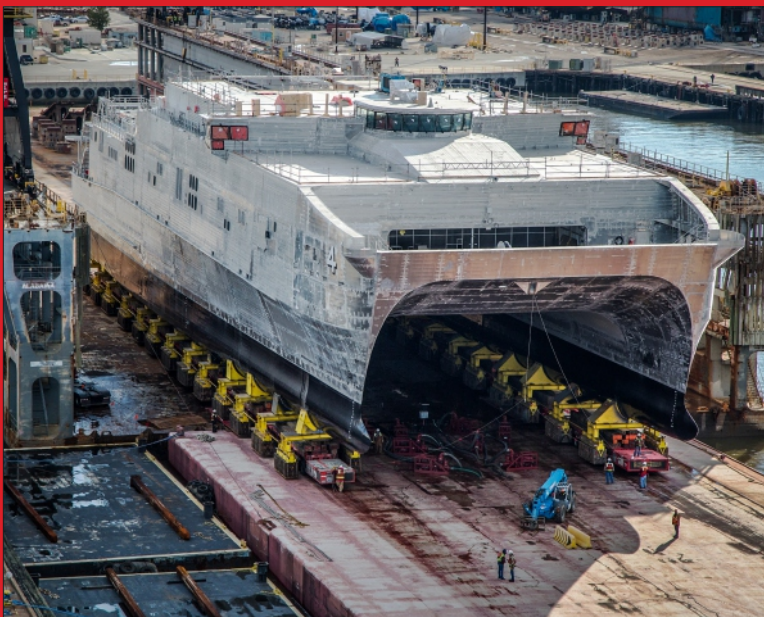
## Job Specs

**Weight:** 2157 Tons

**Dimensions:** 330'L x 94'W x 105'H

**Equipment Used:** 52 axlelines of ESE's, 44 axlelines of SLE's, 6 ppus, loading ramps, high volume water pumps and winches for barge securement

The Berard Team is proud to once again take part in the future of our armed forces. The team loaded out another 2,157 ton joint high speed vessel, (JHSV) named the Fall River, in Mobile, Alabama. On day one of the project, the team transported the JHSV from the client's final assembly bay to a deck barge. Once secured on the barge, it traveled down river to be transloaded the next day. Day two brought the transloading of the JHSV onto the Alabama, an 800' floating drydock. As usual, the transload went smoothly thanks to all involved through all the hard work and dedication to getting the job done safely and successfully by our dedicated team members!



# Living Quarters Loaded Out!



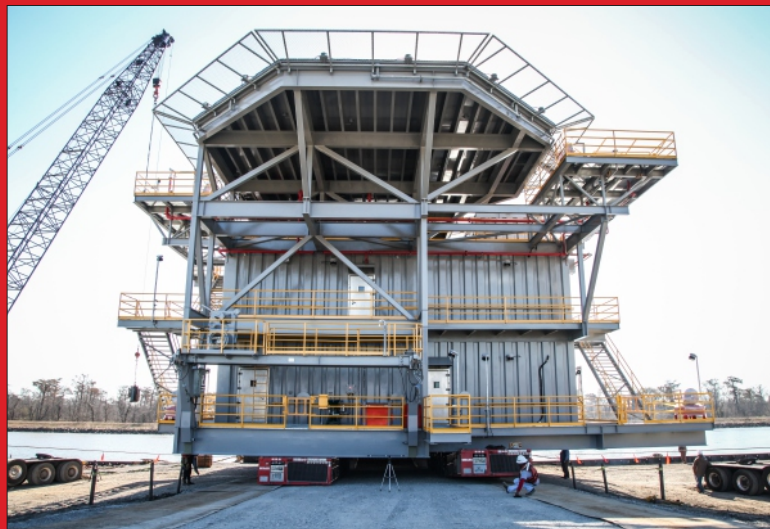
## Job Specs

**Weight:** 575 Tons

**Dimensions:** 115'L x 81'W x 42'H

**Equipment Used:** 24 axle lines of SPMTs, ballast pumps, barge ramps, winch trucks, offshore barge, tugboats, load-spreaders, and securing materials.

Over a year of planning went into transporting this massive living quarters from New Orleans, LA to Ingleside, TX. Working closely with the fabricator from initial design, Berard assisted in developing a new heavy haul road from the fabrication point to barge roll-on area. When it was time to move the package, Berard provided turn-key service to deliver the cargo. Due to the width, this living quarters required an offshore barging route. Berard's engineers developed a roll-on plan, barge layout, and sea fastening plan. In two days, the building was loaded onto the barge and secured for transport. The barge departed early the next morning into the Gulf of Mexico, 2 days later, the tow arrived safely at the destination. A perfectly executed project thanks to a perfectly designed plan by the Berard Team.



## > Team Member Spotlight

# Dylan Albert

## Rigging Designer | CAD Specialist



In July of 2012 Berard added another member to the team; meet Dylan Albert, our CAD Specialist and Rigging Designer. He says he really enjoys his work. "I like the constant flow of new projects that come my way and I really enjoy working with the team at Berard". Dylan has been a CAD Designer since 2005 and has proven himself to be a valuable team member.

When Dylan isn't at work, you can find him bowfishing or hunting and spending time with his new wife Kimberly.

The Berard Team would like to send our very best wishes to the newlyweds!

## > Birthdays @ Berard

# Happy Birthday!

From The Berard Team

Berard sends our best Happy Birthday wishes to these dedicated Team Members this month:

- > Jenny Berard
- > Morgan Berard
- > Hubert Landry
- > Norman Touchet

